

MISSION STATEMENT

PROVIDE A PROPER AND EFFECTIVE SERVICE TO OUR CLIENTS

ACT IN ACCORDANCE TO THE HIGHEST ETHICAL STANDARDS.

AIM FOR TOTAL CUSTOMERS SATISFACTION.

PROVIDE A MOTIVATING AND SAFE WORKING ENVIRONMENT TO OUR STAFF.

AT ALL TIMES SEE THE CHALLENGES IN EVERY SITUATION & OBSTACLE AND NEVER LET THE PROBLEM TAKE CONTROL.

EXCELLENCE IS A WAY OF LIFE AND NOT JUST A TARGET

PROTECT PEOPLE AND THE ENVIRONMENT.

→ ALWAYS ←

POLYFLAKE in EUROPE since 2020

DEVELOPING NEW PRODUCTS:

- PolyFlake SUPERCHEM 2910
- High temperature resistant
 - Highly chemical resistant
 - Highly acid resistant

PolyFlake repair kit, brush / trowel grade:

- Application on any surface with minimal effort
 - Application in / on wet areas / surfaces
-

Applications flawlessly running since almost 40 years without any unscheduled downtime

MAIN OFFICE & WAREHOUSE:

Gessendorfferweg 69
3088 GK Rotterdam
The Netherlands
and
Tinstraat 30,
2984 AN Ridderkerk,
The Netherlands

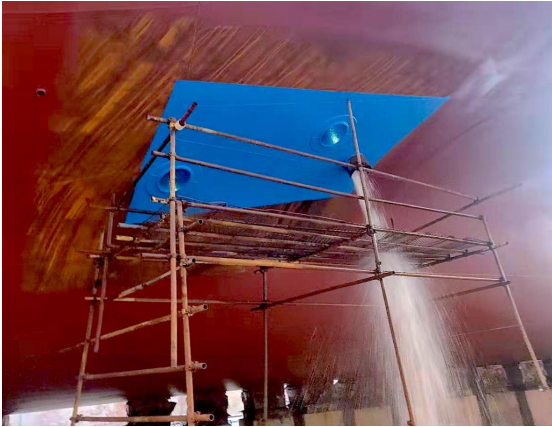
T +31-(0)657 781130
T +31-(0)
info(at)polyflake.eu
www.polyflake.eu

PolyFlake®

Europe bv



Before and After



PolyFlake® since 1987

The first Cured in Place EXTREME COATING System for ANY Marine Application. Since 1987.

The most cost effective and time efficient way to be worry-free from corrosion issues on your assets - LIFETIME Warranty.

- Highly chemical resistant
- Highly acid resistant
- High temperature resistant
- The system is easy to repair

Where

- Hull – Ruder - Decks - Cranes
- Pipes – Flanges - Bents – Elbows
- Tees - Manifolds – Reducers
- Pumps – Casings – equipment
- Ballast tanks – Sea chests
- Anywhere you need corrosion protection

“Your company is the leader”.
We assist you in keeping the pole position. We save you
TIME – RESOURCES - MONEY.

What to know about PolyFlake®

- Any diameter or surface. Thousands of m2 – even complete hulls
- No hot-work required (in 99% of the projects)
- PolyFlake can easily be repaired. No full system-rebuild required.
- Minimal dismantling – access points only
- i.w.o. Pipelines - Depending on the locations and quantities; a cost-reductions of up to 90% compared to normal pipeline renewal can be achieved.
- PolyFlake requires surface preparation to SA 2.0 or WJ2 standard. Then simple cleaning from scale, rust, sludges and debris.
- Substantially less intrusive work execution during the PolyFlake installation compared to steel or pipe renewal
- Simple repair or adjustment procedure
- Time saving → Waiting for the galvanized pipes (weeks) – GRE and GRV pipes (months) – is something from the past
- Warranty as from 5 years, depending on the application up to 40 YEARS

Pricing:

- considerable price advantages compared to normal steel and pipe renewal - **up to 90%**

PolyFLAKE® Corrosion Protection System

- Ideal solution any pipe diameters from 2” to 12” and over, on short and medium pipe lengths; works perfectly for odd shapes and any surface.

- The application is fast. The surfaces can be fully stressed within 24 to 48 hours depending on the PolyFlake application.

PolyFlake polymerizes in place adhering to the internal pipe wall.

- Minimizes disassembly and handling of pipes; in many cases only to create space to get access to the area to be handled.

Preparations:

- Disassembly of the interfering line components
- Surface preparation to SA 2.0 / WJ2
- Mobilization of equipment and material

You save...

- TIME and
- HEADACHE and
- MONEY

with this cutting-edge system

| PHASE | PHASE DESCRIPTION | PIPE REPLACEMENT | POLYFLAKE LINING | POLYTUBE LINING |
|---|--|-----------------------------|---------------------------|-----------------------|
| Pipe UT thickness | For pipes at class thickness limit | Replace | Re-Use existing pipes | Re-Use existing pipes |
| | For pipes below class thickness limit | Replace | n.a. | Re-Use existing pipes |
| Pre-operations | Pipe measure, 3D scan, isometric drafting | Yes | on ship's diagrams | on ship's diagrams |
| | Material list | on site inventory | on ship's diagrams | on ship's diagrams |
| Materials procurement | Material procurement, pipe, flanges, fittings, fabrication, and installation | multiple suppliers | one supplier | one supplier |
| | POLYFLAKE Resin and Application | one supplier | one supplier | one supplier |
| | POLYTUBE Materials and Application | one supplier | one supplier | one supplier |
| Material Transport and Logistics | Material procurement | multiple suppliers | one supplier | one supplier |
| | Material delivery time | medium to long | medium to short | medium to short |
| | Material Weight and Nature | heavy and bulky | light - HAZMAT | light - HAZMAT |
| | Logistics | complex | simple | simple |
| Fabrication | HOT WORK | Yes | No | No |
| | Pipe disassembly and removal | Yes | Yes | extremely limited |
| | Pipe mobilization inside the vessel | Yes | Yes | extremely limited |
| | Pipe transport to the fabrication site | Yes | on-site or on the vessel | none |
| | Pipe mock-up fabrication on old pipe shape | Yes | none | none |
| | Old pipes and materials disposal | Yes | none | none |
| | Pipe cutting (torch, saw, grinder cutter) | Yes | none | none |
| | Pipe Fitting | Yes | none | none |
| | Pipe flanges and fitting welding | Yes | none | none |
| | Pipe optional treatment | Sanblasting | Yes | none |
| Primer application | | Yes | none | none |
| Galvanization (hot dip) | | optional | none | none |
| Transport to hot dip galvanizer | | optional | none | none |
| Galvanizing time | | optional | none | none |
| Galvanizing cost | | optional | none | none |
| Pipe blasting and | | optional | Yes | limited |
| Polyflake protection application | | optional | Yes | limited |
| Pipe cleaning and | | optional | n.a. | Yes |
| Polytube liner application on site | optional | n.a. | Yes | |
| Pipe installation | Pipe transport to the vessel | Yes | only if OFF the vessel | none |
| | Pipe mobilization on the vessel | Yes | Yes | none |
| | Pipe dismantling | Yes | Yes | nihil |
| | Pipe installation | Yes | Yes | nihil |
| | Pipe adjustment on the vessel / on site | Yes, 10% to 35% | none | none |
| | Touching of the Polytube or Polyflake treatm. | limited | limited | nihil |
| Working teams | in Drydock | various teams / location | one team of 4 to 6 - 24/7 | one team of 6 - 24/7 |
| | Production speed in Drydock | LOW | high | very high |
| | During operations | teams of 8 / low output | good productivity | high productivity |
| | Production speed during operations | LOW | medium to high | high |
| | maximum archived results in 24 hours till date | n.a. | 150m2 / team | 1100m length / team |
| Time to complete | in Drydock | long - potentially critical | non time determining | non time determining |
| | in Operation | long - potentially critical | non time determining | very fast |
| Expected life in Years | No treatment of the pipes | 2 -5 years max | n.a. | n.a. |
| | Primed pipes | 2 - 6 years max | n.a. | n.a. |
| | Scrubber washwater exhaust pipe | 6 - 12 months max | n.a. | n.a. |
| | Galvanized (hot dip galvanized) | 5 - 8 years | n.a. | n.a. |
| | POLYFLAKE application / repairable on site | 20 - 50 years | 20 - 50 years | 20 - 50 years |
| | POLYTUBE application / repairable on site | 20 - 50 years | 20 - 50 years | 20 - 50 years |